

Leg 26

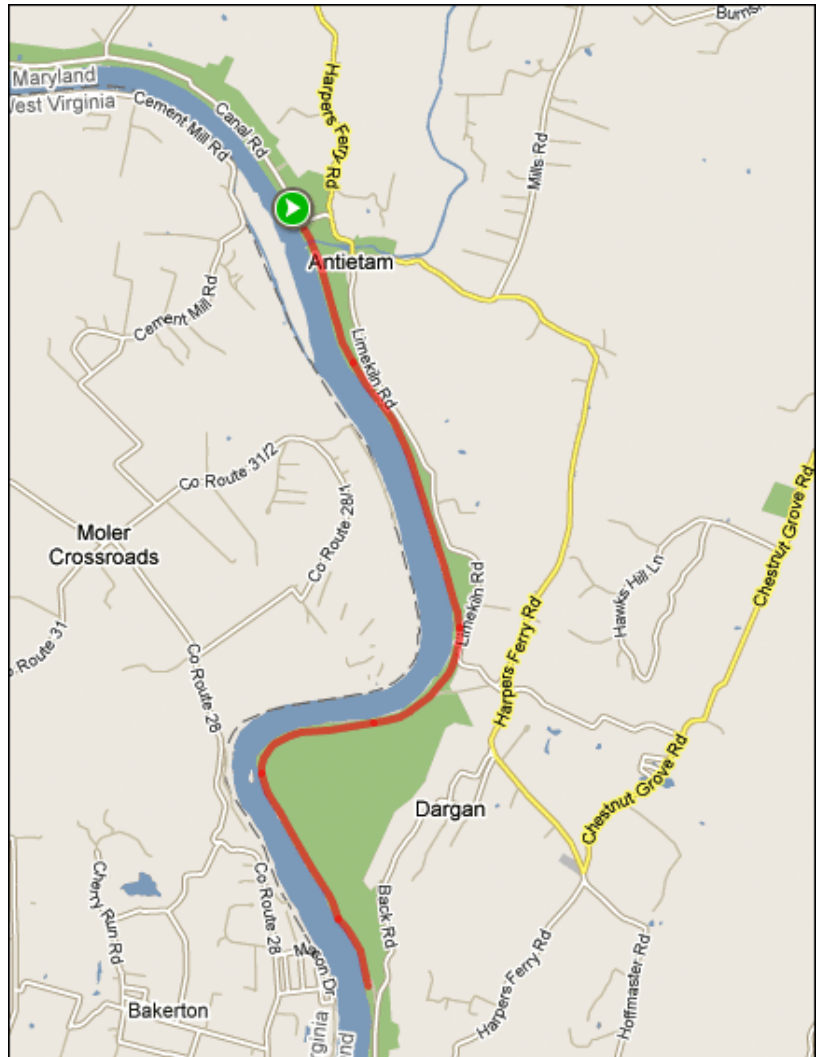
4.7 MILES | MEDIUM



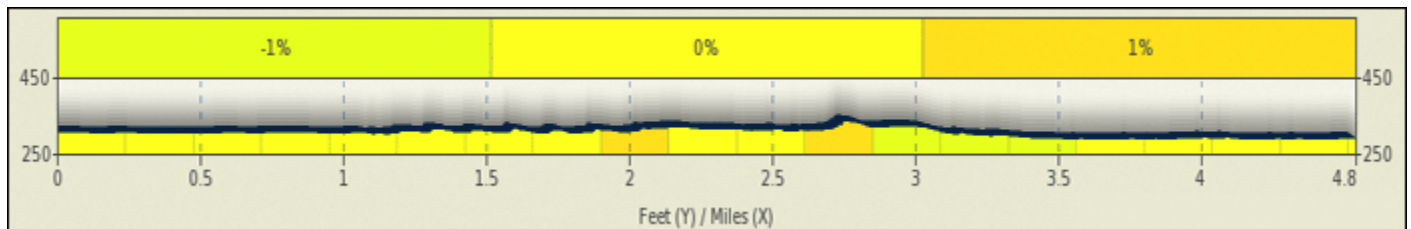
RUNNERS

Mileage is per segment, not cumulative

1. C&O Canal Antietam Campground to Dargan Bend



ELEVATION: min: 285ft | max: 417ft | ascent: 144ft | descent: -157ft



Leg 26

4.7 MILES | MEDIUM



VANS

Mileage is per segment, not cumulative

1. Drive .1 to end of Canal Road and make a right onto Harpers Ferry Road. Go over the Antietam Bridge and continue straight up hill on Limekiln (do not bear left over the bridge!)
2. At about 2.2 miles along Limekiln there is a parking lot on the right where you can pull over and wait for your runner.
3. Continue .3 on Limekiln and make a right on
4. Harpers Ferry Road to Dargan (sign for New Fellowship Church) and turn right.
5. Take Dargan to Back Road and turn right. Transition is approximately 1.0 on right.

POINTS OF INTEREST:

Associate Supreme Court Justice, William O. Douglas, became the 20th century savior of the Canal when he exhorted Congress to turn it into a national park, which finally occurred in 1971.

Please take your trash with you out of the park and do not in any way interfere with any one else's use of the Canal or the towpath. Our continued ability to use the C & O Canal towpath will depend, in large part, upon our being good users of the property.

Port-a-potties are available at Dargan Bend.

(Antietam Bridge is scheduled for construction starting this Spring so these directions may be subject to change.)